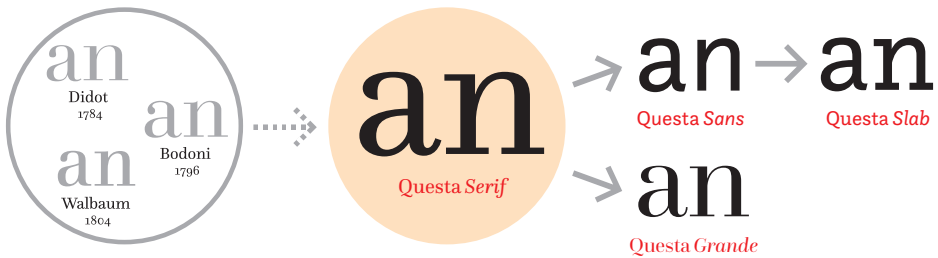

The *Questa* Project

THE *QUESTA* PROJECT is a type design adventure by Dutch type designers *Jos Buivenga* and *Martin Majoor*. Their collaboration began in 2010 using Buivenga's initial sketches for a Didot-like display typeface as a starting point. This was a perfect base on which to apply Majoor's type design philosophy that a serif typeface is a logical starting point for creating a sans version and not the other way around. The extensive *Questa* family includes serif, sans, slab and display typefaces in five weights. The inclusion of small caps, ligatures, four sets of figures and extended language support makes *Questa* a real workhorse typeface. *Questa* was selected amongst the 50 most noteworthy font releases of 2014, chosen by a panel of experts and published in the 365Typo annual book, in collaboration with Association Typographique Internationale (ATypI).



Questa Serif

First of all *Questa* serif was designed, not in the least to serve as a basis for both the sans and the display version. Neoclassicist type-faces like *Didot*, *Bodoni*, and *Walbaum* were a source of inspiration, however the goal was not to make a revival, but rather to design an original typeface. The contrast within *Questa*'s characters is relatively high. At the same time the thin parts and the unbracketed serifs are strong enough to prevent characters from breaking open.

Questa Grande

The display version of *Questa* – with its very thin hairline serifs – is quite elegant and refined in detail. It is designed in the spirit of the best work of *Firmin Didot* and *Giambattista Bodoni*. In all weights of *Questa Grande* the thin parts share exactly the same thickness of stroke.

Questa Sans

In developing the sans there was no room for 'niceties'. *Questa Sans* is simply based on the shapes of *Questa* serif. The way the sans was going to look was a logical outcome of the process of cutting away the hairline serifs, changing the contrast, and optically correcting its shapes. The italic of *Questa Sans* is modeled on the italic of its serifed counterpart, which results in a 'real' italic: its whole construction is essentially different than that of the roman.

Questa Slab

Based on the shapes of *Questa Sans*, the slab version is a logical step towards a type super family. The robust character of *Questa Slab* makes it suitable for both text and display, but also for small print. It can be perfectly mixed with the serif and the sans serif versions of *Questa*.